



Ronald McDonald  
House Charities®  
Intermountain Area

# STORIES of STRENGTH

Building Hope...One Brick at a Time



Presented By

GEORGE S. AND DOLORES DORÉ ECCLES  
F O U N D A T I O N

# Syndicate Trip



## Build Your Own Cruise Vacation!

Picture a once-in-a-lifetime Viking River Cruise—won in this year's syndicate trip drawing! With \$5,000 and airfare included, you can choose from Viking's exquisite itineraries.

Sail Europe's enchanting waterways, glide along the serene Danube to explore Vienna and Budapest, or cruise the romantic Rhine past storybook castles and charming villages.

Onboard, indulge in luxurious accommodations, world-class cuisine, and enriching cultural experiences. This is your chance to create the ultimate getaway!

### Package Includes:

- \$5,000 towards a Viking River Cruise of your choice
- Professional planning support from a Viking River Cruise agent
- \$1,200 Delta gift cards to go toward your flights

NOTE: The winner is responsible for any trip costs above \$5,000.



# Spirit of Children Gala



**Saturday, April 5, 2025**  
**The Grand America Hotel**

We invite you to join us for the RMHC Spirit of Children Gala—one of Salt Lake City's premiere fundraising events. In 2025, we are excited to welcome up to 1,200 attendees to raise over \$1M in support of our mission.

Sponsors of this flagship event have raised funds each year to directly support pediatric patients and their families. In fact, thanks to our donors and sponsors, the 2024 Spirit of Children Gala raised an inspiring amount of support equivalent to covering the full cost of 11,200 nights!

## **Gala Sponsorship Package Recognition and Benefits**

All Gala sponsorship levels include the following proportional recognition and benefits, unless otherwise noted:

- Guest table(s) for 10 guests each with proportional placement relative to the main stage
- Sponsor name, logo, and/or advertisement of proportional sizes based on sponsorship level in our event program
- On-screen and signage recognition
- Recognition in the RMHC Annual Report
- Sponsorships at the \$15,000 level and above receive recognition on the RMHC Gala webpage

For more detailed information, please visit [rmhcslc.org/events/gala](https://rmhcslc.org/events/gala).



# Sponsorship Opportunities



## GUARDIAN OF LIGHT SPONSOR – \$100,000

- Two tables of 10 guests each with premier placement
- Special presentation prior to "Helping Hands" portion of the Gala
- Recognition for "Helping Hands" \$100,000 Grant Match
- Sponsor name, logo, and advertisement in event program (two-page spread)
- On-screen and emcee recognition with sponsor name on signage near stage

### \*Mission also includes:

- Pro Sponsorship of RMHC Annual Golf Tournament with two foursome entries
- Adopt-A-Room sponsor recognition on a guest room at the Ronald McDonald House or Family Room for one year

## MISSION SPONSOR – \$65,000 \*

- Two tables of 10 guests each with premier placement
- Recognition for "Helping Hands" \$10,000 Challenge
- Prominent logo placement throughout the Gala's "Mission Walk"
- Sponsor name, logo, and advertisement in event program (two-page spread)
- On-screen and emcee recognition with sponsor name on signage near stage

### ‡Gratitude also includes:

- Ace Sponsorship of RMHC Annual Golf Tournament, including one foursome entry and logo on attendee gifts
- Adopt-A-Room sponsor recognition on a guest room at the Ronald McDonald House or Family Room for one year

## GRATITUDE SPONSOR – \$35,000 ‡

- Two tables of 10 guests each with premier placement
- Recognition during silent auction with logo displayed on mobile bidding site
- Sponsor name, logo, and advertisement in event program (two-page spread)
- On-screen and emcee recognition with sponsor name on signage near stage

### §Joy also includes:

- Adopt-A-Room sponsor recognition on a guest room at the Ronald McDonald House or Family Room for one year

## JOY SPONSOR – \$25,000 §

- One table for 10 guests with primary placement
- Recognition during silent auction with logo displayed on mobile bidding site
- Sponsor name, logo, and advertisement in event program (one page)
- On-screen and emcee recognition with sponsor name on signage near stage



## Sponsorship Opportunities – continued

### LAUGHTER SPONSOR – \$15,000

- One table for 10 guests with prominent placement
- Recognition on evening photo memorabilia
- Sponsor name, logo, and advertisement in event program (one page)
- On-screen and emcee recognition with sponsor name on signage near stage

### HEART SPONSOR – \$10,000

- One table for 10 guests with preferred placement
- Recognition as the Heart Sponsor with logo on table signage
- Sponsor name, logo, and advertisement in event program (half page)
- On-screen and emcee recognition with sponsor name on signage

### STRENGTH SPONSOR – \$5,000

- One table for 10 guests with preferred placement
- Sponsor name, logo, and advertisement in event program (half page)
- On-screen and signage recognition



# Helping Hands

## Helping Hands Donations

Each year corporations and individuals donate funds at the Gala to support the core mission of RMHC. These Helping Hands donations are 100% tax deductible and can be made in addition to any sponsorship level — or in the place of you or your organization's ability to sponsor or attend the Gala this year.

All Helping Hands donations will be recognized on-screen at the event and donations of \$1,000 or more will be recognized in the event program. Additionally, when individuals make a personal donation of \$1,000 or more, they also become one of our Grand Givers for 2025.

**Thank you for your help in keeping our families together.**



# 2025 Gala Sponsorship Form

Thank you for your support. If you have any questions or would like to reserve your table, please contact Vickie Moschetti, Chief Philanthropy Officer. Phone: (801) 363-4663. Email: vickie@rmhslc.org.

## Sponsor Information

Name of Company/or Individual: \_\_\_\_\_

Name of Point of Contact: \_\_\_\_\_

Address \_\_\_\_\_

City \_\_\_\_\_ State \_\_\_\_\_ Zip \_\_\_\_\_

Telephone \_\_\_\_\_ E-mail \_\_\_\_\_

Sponsorship Name as you would like it to appear in the program:

\_\_\_\_\_

## Sponsorship Levels

- |  |   |
|--|---|
| <input type="checkbox"/> \$100,000 Guardian of Light Sponsor | <input type="checkbox"/> \$65,000 Mission Sponsor       |
| <input type="checkbox"/> \$35,000 Gratitude Sponsor          | <input type="checkbox"/> \$25,000 Joy Sponsor           |
| <input type="checkbox"/> \$15,000 Laughter Sponsor           | <input type="checkbox"/> \$10,000 Heart Sponsor         |
| <input type="checkbox"/> \$5,000 Strength Sponsor            | <input type="checkbox"/> \$_____ Helping Hands Donation |
- I will host my table and fill the seats
- I am unable to attend and will donate the seats back to RMHC
- I am interested in donating to the silent/live auction. Please contact me.

Online Payments can be made on website: [rmhslc.org/events/gala](http://rmhslc.org/events/gala).

Please charge my:  Visa  MasterCard  American Express  Discover Card

Card # \_\_\_\_\_

Exp Date Code \_\_\_\_\_

Name on Card \_\_\_\_\_

Signature \_\_\_\_\_

Make checks payable to: Ronald McDonald House Charities

Mail to: Ronald McDonald House Charities, 935 E. South Temple, Salt Lake City, UT 84102.



**Ronald McDonald  
House Charities®**  
Intermountain Area

## EARNING YOUR TRUST



We strive to earn your trust each year. In 2024, we once again received a 4-Star ranking for nonprofit accountability and excellence from Charity Navigator—the highest possible ranking.

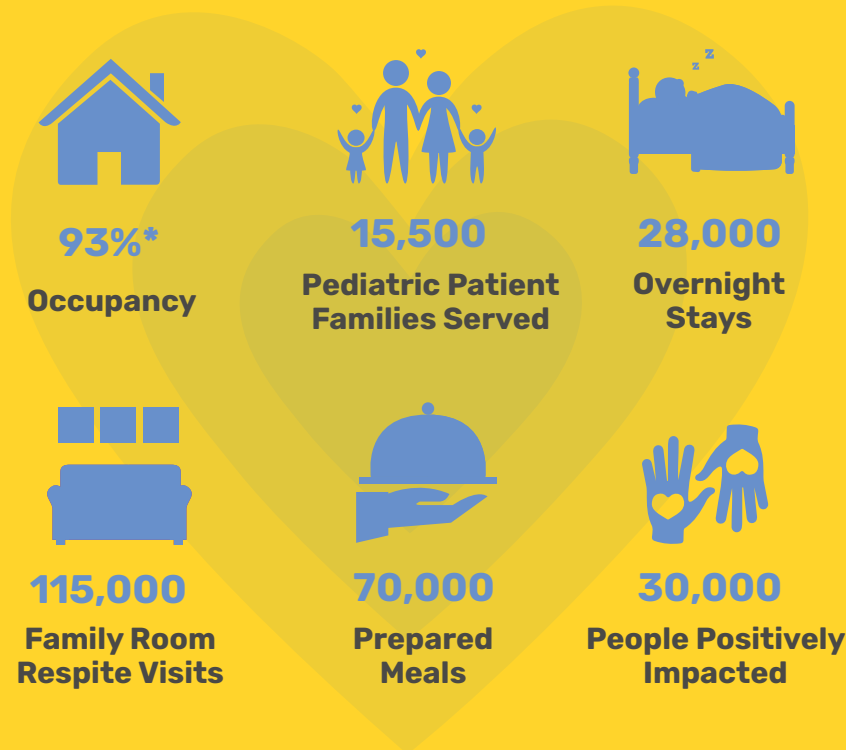


For the sixth straight year we've been recognized as one of Utah's Top Workplaces by the Salt Lake Tribune.



We achieved the Platinum Seal of Transparency on Candid (formerly Guidestar), the world's largest source of nonprofit info. This puts us in the top 0.1% of charities nationally in terms of transparency.

## AVERAGE ANNUAL IMPACT



\*With average occupancy above 90% at our Ronald McDonald House and Ronald McDonald Family Rooms, RMHC is often at capacity and can't serve all the pediatric patient families who need support. Your contributions help us grow.